

## CONFERENCE SPEAKERS:

### Ross Greene – Living in the Balance Author and Renowned Speaker



Ross W. Greene, Ph.D., is the New York Times bestselling author of the influential books *The Explosive Child*, *Lost at School*, *Lost and Found*, and *Raising Human Beings*.

He is the originator of the model of care described in those books, now called Collaborative & Proactive Solutions (CPS). Dr. Greene was on the faculty at Harvard Medical School for over 20 years, and is now founding director of the non-profit *Lives in the Balance*, which provides a vast array of free, web-based resources on the CPS model.

He has appeared in a wide range of media, including *The Oprah Show*, *Good Morning America*, *The Morning Show*, National Public Radio, *Mother Jones* magazine, *The Atlantic*, *The Washington Post*, *The Chicago Tribune*, and *The Boston Globe*. Dr. Greene lectures and consults widely throughout the world and lives in Portland, Maine.

### Elaine Hall - Neurodiversity Pioneer and Parent. She's the creator of The Miracle Project and showcased in "Autism: The Musical."



When Elaine's son, Neal, adopted from a Russian orphanage, was diagnosed with Autism, she did what any parent would do — took all of her skills and resources into her own hands to create the most independent life possible for him. Utilizing theater, music, and movement she joined his autistic world to create a space of deep connection, acceptance and appreciation.

Through the process, Elaine developed *The Miracle Project*®, a groundbreaking, now evidence-based program that uses theater arts to integrate traditional and creative therapies in an interactive, social dynamic. Children, teens and young adults, once too shy to even walk into a room of their peers, have now found their voice, developed their talents, and most importantly made friends.

Since then, The Miracle Project® has been profiled in an Emmy Award-Winning HBO documentary, Autism: The Musical.

**Tony Attwood** – Clinical psychologist, speaker and author specializing in autism



Tony is a clinical psychologist who has specialized in Autism Spectrum Disorders since he qualified as a clinical psychologist in England in 1975. He currently works in his own private practice, and is also adjunct professor at Griffith University, Queensland. His book *Asperger's Syndrome – A Guide for Parents and Professionals* has sold over 500,000 copies and has been translated into 27 languages. His subsequent book, *The Complete Guide to Asperger's Syndrome*, published in October 2006 has sold over 300,000 copies and has been translated into 18 languages, and is one of the primary textbooks on Asperger's syndrome, otherwise known as Autism Spectrum Disorder – Level 1.

**Amy Wetherby** - Distinguished Research Professor and Director, Autism Institute



Amy is a Distinguished Research Professor in the Department of Clinical Sciences and Director of the Autism Institute in the College of Medicine at Florida State University (FSU). I am a Fellow of the American Speech-Language-Hearing Association with over 40 years of clinical experience, am Executive Director of the FSU Center for Autism and Related Disabilities (CARD), and have served on the National Academy of Sciences Committee for Educational Interventions for Children with Autism and the DSM-5 Neurodevelopmental Workgroup of the American Psychiatric Association, which revised the diagnostic criteria for Autism Spectrum Disorder (ASD) and other developmental disorders for the DSM-5. Amy brings

unique research and clinical expertise infusing technology to improve early detection and parent-implemented early intervention.

**Magda Mostafa**- Magda Mostafa is a professor of Design in the Architecture Department at The American University in Cairo

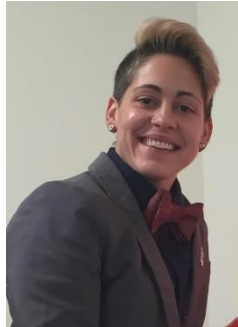


Magda is currently the co-director of the UNESCO-UIA education commission and validation council, which is a global think-tank tasked with setting architectural education policies and practices as well as upholding threshold standards of excellence.

She is a design associate at the Cairo-based practice progressive architects where she specializes in autism-inclusive design. She is the author of autism ASPECTSS™ design guidelines, the world's first research-based design framework for autism worldwide.

ASPECTSS™ has been presented at the United Nations as a framework for international autism design policy, as well as showcased in lectures and keynotes at Harvard's GSD, the National Autistic Society in the UK, Ireland's ASIAM and the World Autism Organization

**Amy Laurent & Jacquelyn Fede** - Autistic Advocates and the co-founders of Autism Level UP!



A partnership of two developmental psychologists, one autistic and the other allistic. Our philosophy is that through education, accessible resources, practical strategies and a commitment to consistently incorporating the experiences and perspectives of autistic people, we can support the leveling up of society when it comes to autism and neurodiversity. Of course, our primary goal is to support autistic individuals, but the more we are able to spread real

awareness and support others in moving from awareness to acceptance, acceptance to appreciation, and from empowerment to advocacy, the more positive change we will see at those large institutional and societal levels that can greatly benefit the autistic community.

**Jessica Brian**- Psychologist and Senior Clinician Scientist at Holland Bloorview Kids Rehabilitation Hospital and Associate Professor at the University of Toronto in the department of Paediatrics



Dr. Brian co-leads the Autism Research Centre at Holland Bloorview. Dr. Brian received her Ph.D. from the clinical-developmental program at York University and received intensive training in Applied Behaviour Analysis during a full-year internship at the Princeton Child Development Institute in New Jersey. Jessica has been heavily involved in a range of multi-site research programs aimed at understanding the emergence of ASD, the behavioural phenotype, and genetic markers of ASD and related disorders.

**Kim Clairy** – Autistic occupational therapist, international speaker, consultant, author, and self-advocate.



Kim developed her passion for educating clinicians through her own personal experience navigating a healthcare system unfamiliar with Adult Autism and Sensory Processing Disorder. Kim learned to break through many personal and societal barriers, including navigating the healthcare system with ASD and an eating disorder (ED). Her experiences forged a passion for educating others on ASD, SPD, and eating disorders with the hope of helping give voice to those

unable to articulate their inner worlds. Now in recovery, she is an autism advocate and uses her unique perspective as an OT living with autism to teach continuing educational seminars to healthcare clinicians nationwide.

**Michael McCreary** - Autistic Comedian and Public Speaker



Michael had been performing stand-up comedy since age 13. In the past 8 years, he has performed stand-up shows and keynote addresses in every province in Canada – plus the Yukon - and across the United States. Michael has also written the book “Funny, You Don’t Look Autistic” (Annick Press), hosted the Autism Ontario video “Autism: See the Potential”, has consulted on the TV show “Ransom” to ensure the authenticity of a character with autism and has been featured on The National and on CBC Radio’s “Laugh Out Loud”!

**Carmen Moore** - Public Speaker/Consultant/Author/Parent



Carmen Moore was most recently an inclusive education coach with Peace Wapiti School District. She has over twenty five years in the field of education as a teacher, principal, and inclusive education coordinator. She is a freelance writer, has contributed to curriculum content, has recently attained her Masters of Religious Education (MRE from Felician University), a Graduate Certificate in Autism Spectrum Disorder/MSE, CAS (Certified Autism Specialist) (University of Kansas) and is a public speaker on a variety of topics. Carmen was a member of the ATA Association Instructors and has had extensive training through this opportunity as well. She is also the past President of the Council for Inclusive Education for the Northwestern area (ATA). However, she most enjoys her time as a wife and mother.



**Terri Duncan** – Executive Director at Children’s Autism Services of Edmonton/Public Speaker

Terri Duncan is the Founder and Executive Director of Children’s Autism Services of Edmonton. She is a Speech Language Pathologist and has worked with children with autism and a broad range of developmental delays. Terri has her B.A. in Psychology and Linguistics from the University of Ottawa and her Master’s Degree in Speech Language Pathology from the University of Alberta.

Terri has been consulting in schools, homes and communities for more

than 20 years, an interest that began when she worked as an aide with a four-year-old boy with autism in a family's home. Since that time, she has been fascinated by the complexity of autism and the resilience of families dealing with the challenges they face on a daily basis. Terri founded Children's Autism Services of Edmonton in 2004 and since that time, the organization has become one of the largest service provider in Western Canada serving more than 500 families every year.